



EMAIL: [support@triglobal.net](mailto:support@triglobal.net)

PHONE: 706-410-2372

## Pairing the Asteri GNSS receiver to Partner Field Maps on Windows



# Pairing the Asteri GNSS receiver to Partner Field Designer on Windows

## Table of Contents

<a href="#">Recommended Reading.....</a>	<a href="#">3</a>
<a href="#">Connecting to Windows (10+).....</a>	<a href="#">3</a>
<a href="#">Windows 11.....</a>	<a href="#">4</a>
<a href="#">Utilizing Asteri GNSS within Partner Field Designer.....</a>	<a href="#">8</a>
<a href="#">Proper Baud Rates for the Asteri GNSS Receivers.....</a>	<a href="#">9</a>
<a href="#">Related Resources.....</a>	<a href="#">11</a>

## Recommended Reading

- Asteri Overview

# Pairing the Asteri GNSS receivers within Partner Field Maps (Windows 10+)

Device and Software versions used:

- Asteri X4i GNSS Receiver
- Dell XPS 9320 Laptop
- Windows 11 Pro
- Partner Field Designer v4.30

## Connecting to Windows (10+)

\*This set of instructions is for connecting an Asteri GNSS receiver to a Windows 10 based laptop or PC.

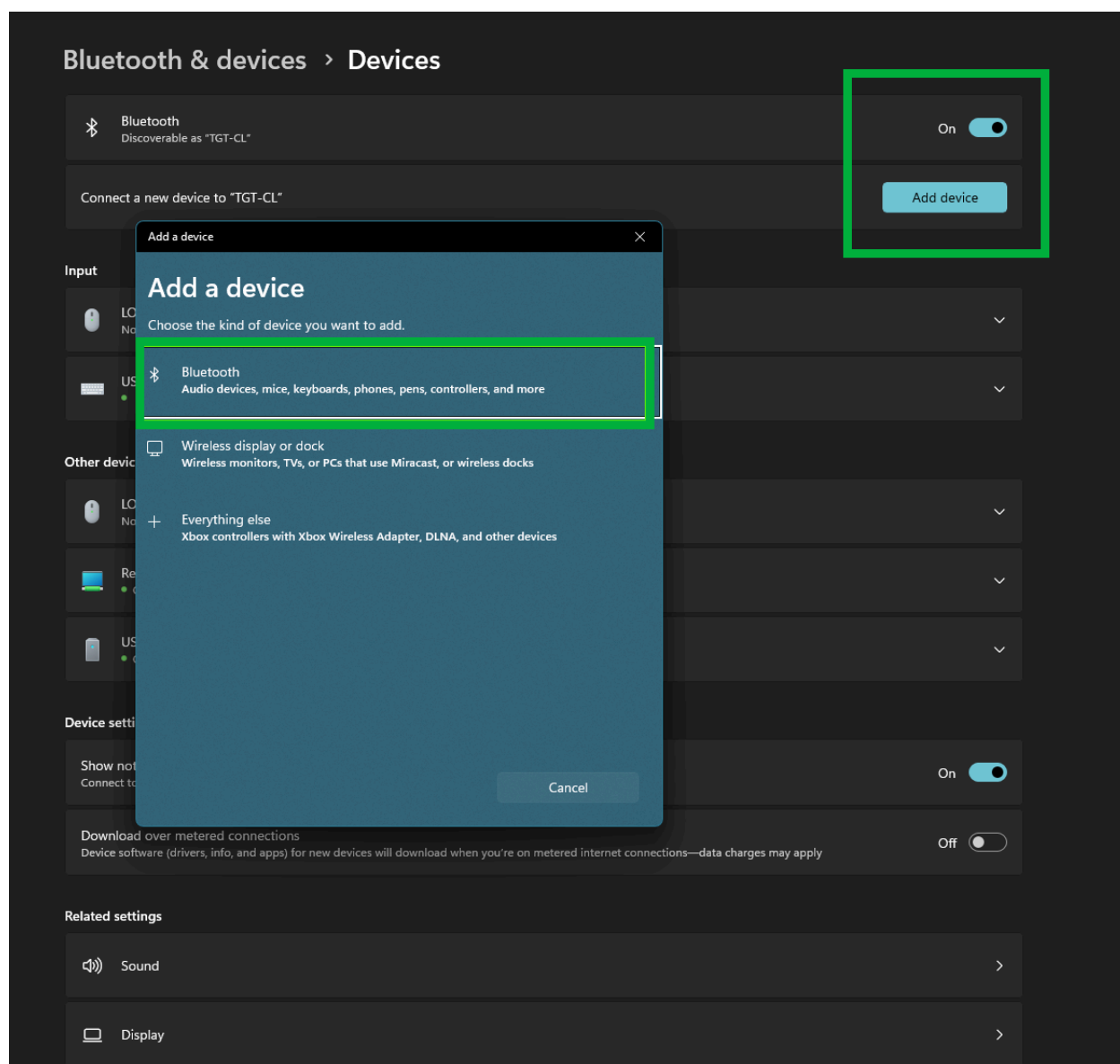
Please scroll down to the next section for Connecting the Asteri Xi-Series to a Windows Device (Windows 11)

To connect your Asteri GNSS Receiver to a Windows laptop or PC, simply follow these steps:

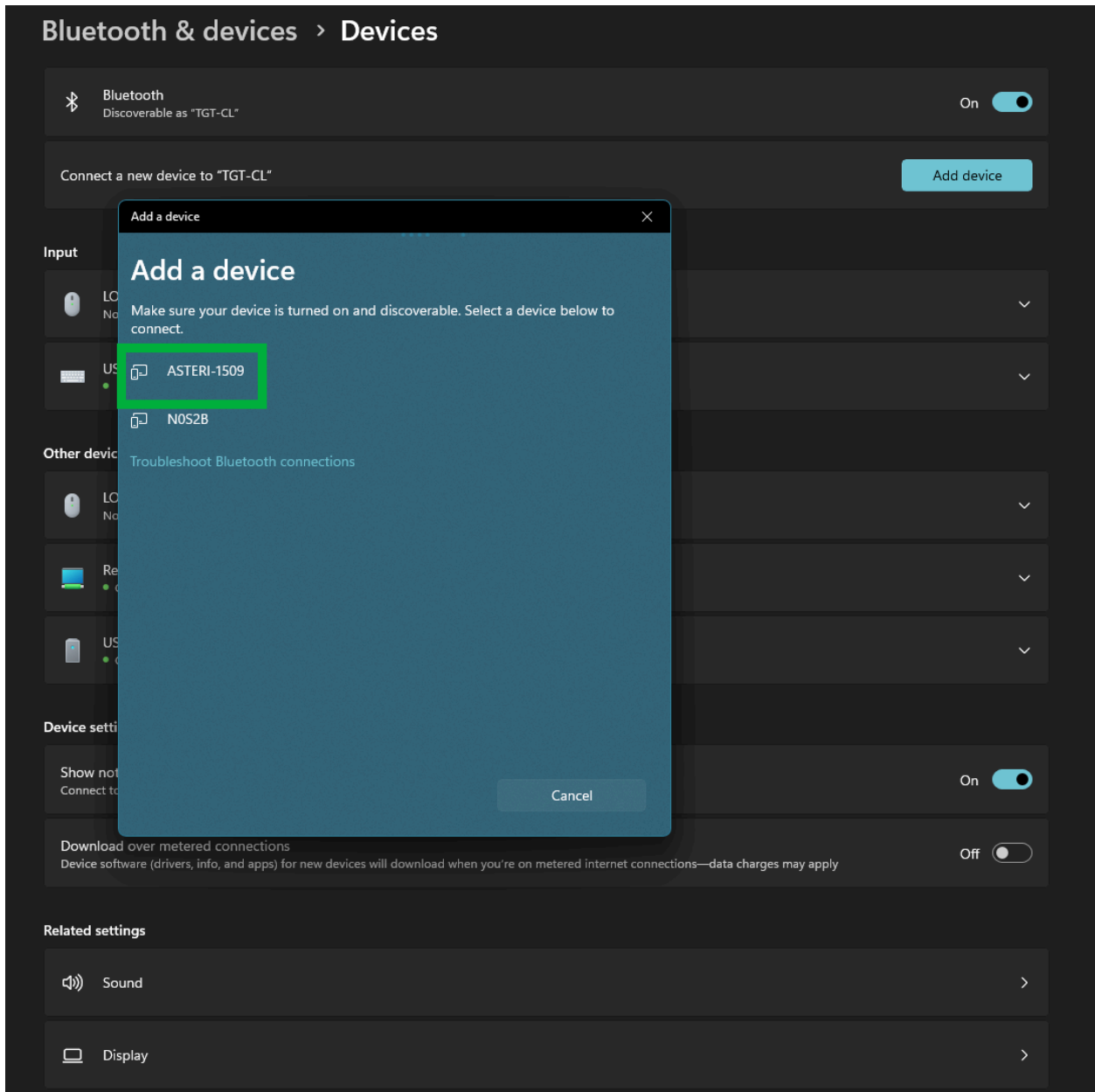
1. Ensure your Asteri GNSS receiver is powered on and nearby.
2. On your Windows laptop or tablet, navigate to **SETTINGS**
3. Select **BLUETOOTH**, and ensure it is turned **ON**.
4. Click **ADD BLUETOOTH OR OTHER DEVICE**, and select **BLUETOOTH**.
5. Browse until you find your Asteri device. Your Asteri device will have the name "Asteri-XXXX," where "XXXX" indicates the last four digits of your Asteri GNSS receiver's serial number. Note the BLE models will display the whole serial number.  
*\*The serial number is located underneath the battery.*
6. Click on that device serial number and it will pair to the device but not show being connected.
7. Select **more bluetooth Options** and find the **COM Ports**. Find the COM port for the Outgoing bluetooth SPP (Serial Port Profile) that the Asteri was assigned to and make note.

## Windows 11

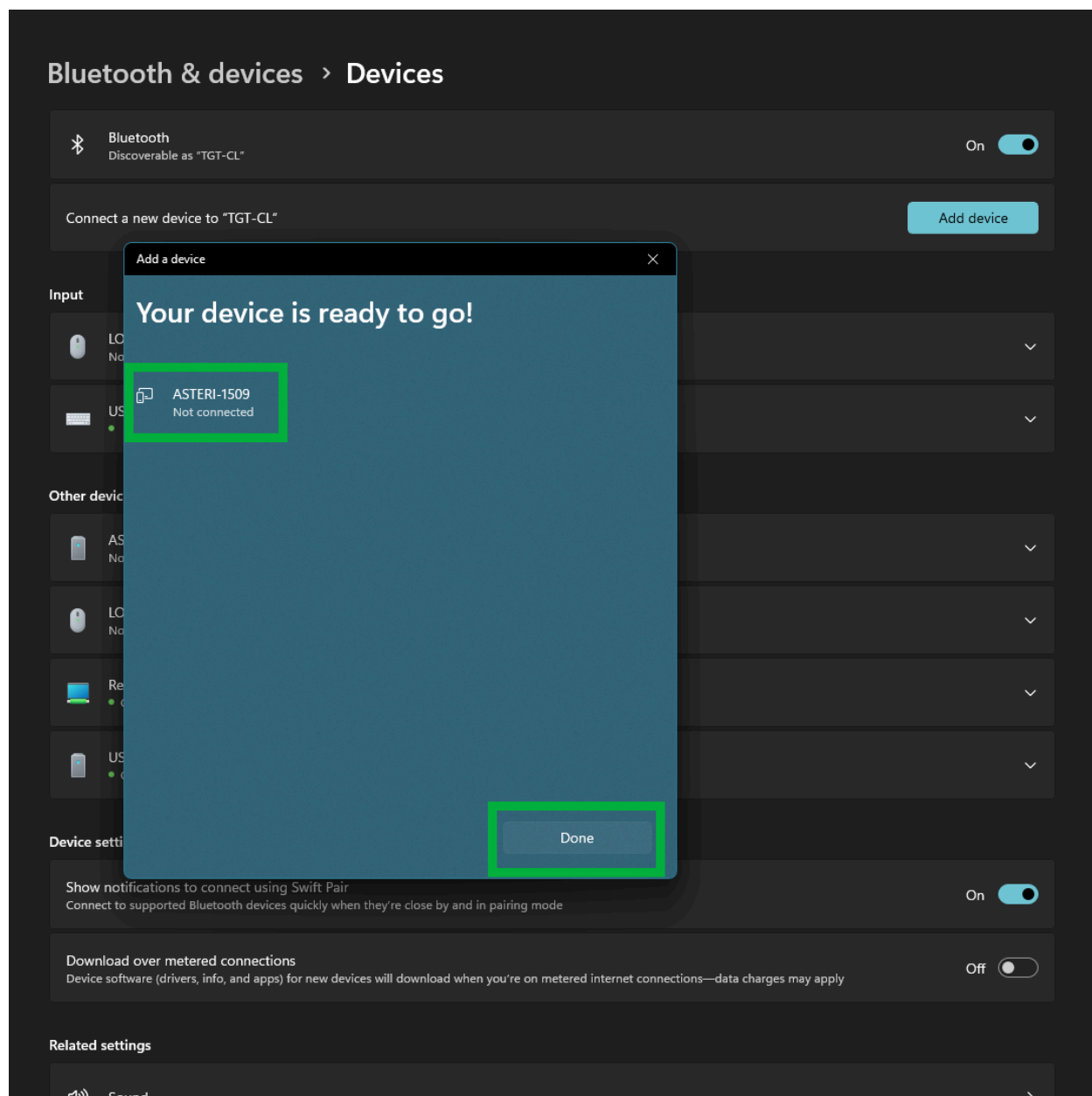
Steps are similar to Windows 10.... However, it won't always recognize the SPP (serial Port Profile) automatically. In some cases on laptops running Windows11, you may need to go to More bluetooth settings first and click "**ADD**" to manually add the outgoing COM port.



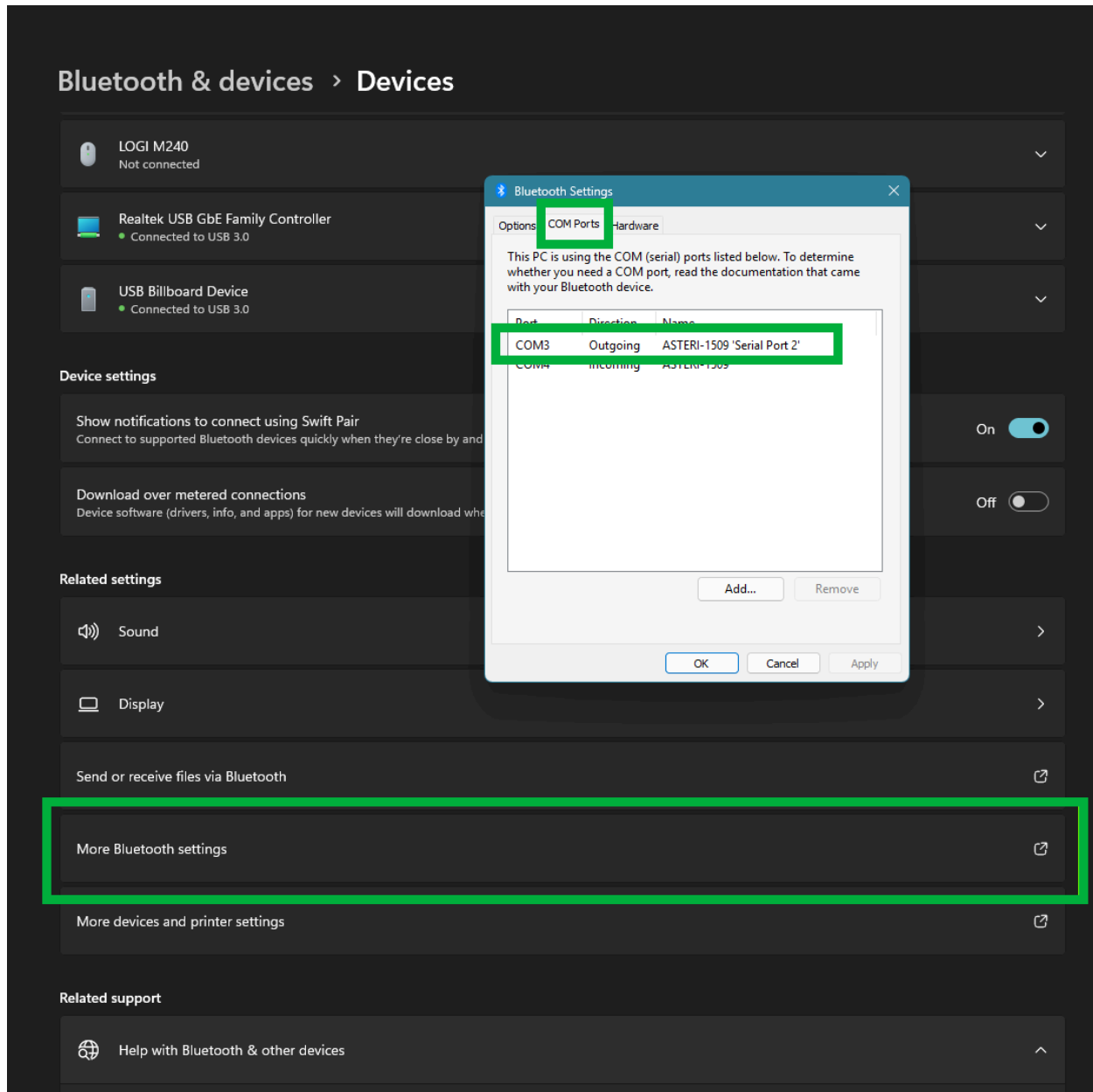
Adding a new Bluetooth device



Adding the Asteri GNSS receiver



Asteri is paired to the Windows laptop



Accessing the Com ports menu through More Bluetooth settings

## Utilizing Asteri GNSS within Partner Field Designer

1. Launch the Partner Field Designer
2. Go to **EDIT**, **GPS**, **Edit GPS Settings** or select **SETTINGS** from the GPS portion of the **TOOLS** tab to open the GPS Configuration window.
3. Ensure the **NMEA** is the GPS type selected.



4. Within the NMEA settings on the right hand side of the GPS Configuration window select your **COM PORT** from the drop down the Asteri GNSS receiver was assigned to in the previous steps.
5. Enter in your correct BAUD RATE. This is a text box and the appropriate Baud Rate can be manually entered. See chart below.

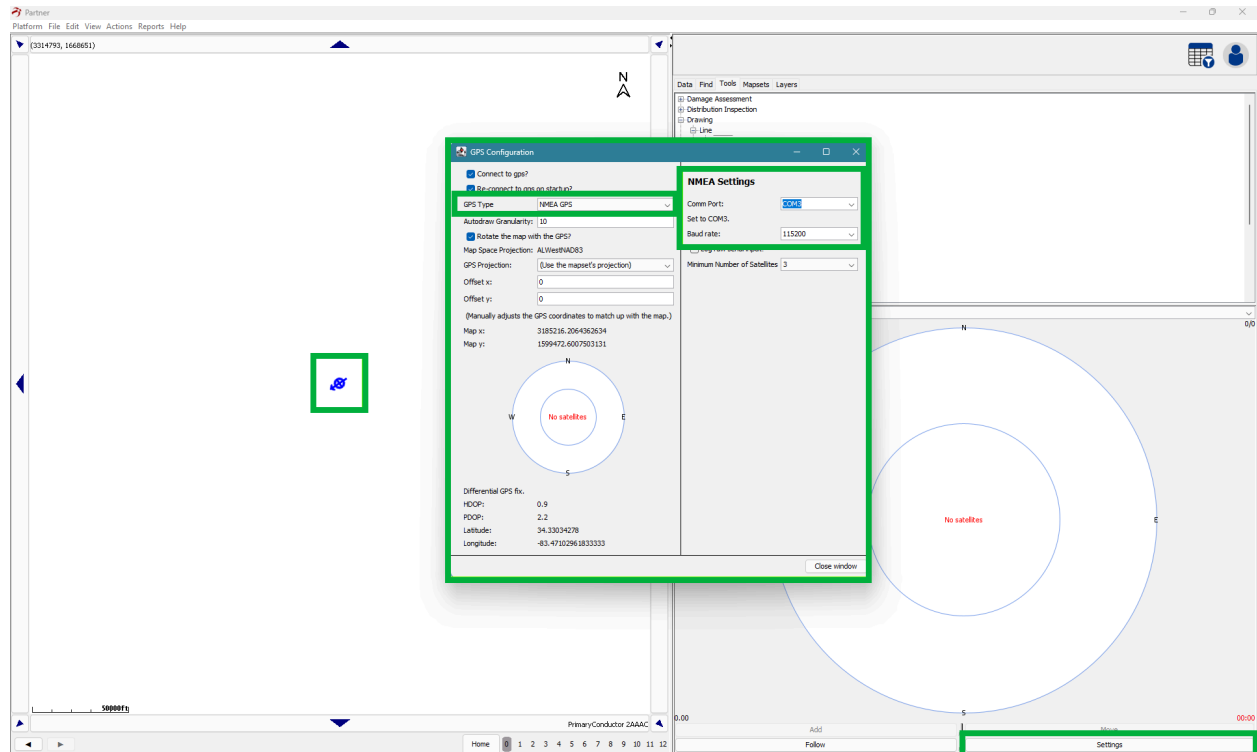
### Proper Baud Rates for the Asteri GNSS Receivers

Asteri X1 (BLE)	9600
Asteri X1i (MFi)	38400
Asteri X2i (MFi)	38400
Asteri X3 (BLE and MFi)	19200
Asteri X4i (MFi)	115200

**BLE**= Bluetooth Low Energy models ( Asteri GNSS receivers with a BLACK label )

**MFi**= Made for iOS models ( Asteri GNSS receivers with a GOLD label )

Partner Field Maps is now connected to the Asteri GNSS receiver and will be utilized for GPS positions.



Within the Tools menu the GPS Settings menu is shown

## Related Resources

- [Resolving Connection Issues](#)